

Dream B2202

Innovative Ergonomic All-purpose Chair

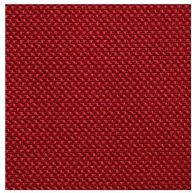
- *Swivelling
- *Perforated plastic back integrated with armrest
- *Flexible intelligent back movement
- *Upholstered polyester fabric with mold foam
- *Simple mechanism: Height adjustment
- *Tilt limiter
- *Self weight adjustment seat design
- *Class 3 gaslift
- *Alluminum alloy base
- *Active castors



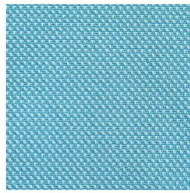
Colors



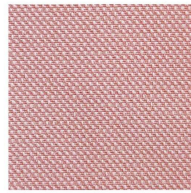
Swatches



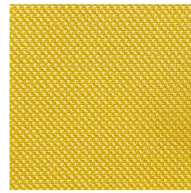
HY-60000
Red



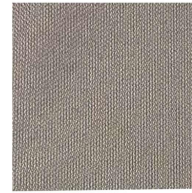
HY-60000
Sky Blue



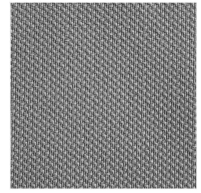
HY-60000
Pink



HY-60000
Yellow



HY-60000
Taupe



HY-60011
Grey



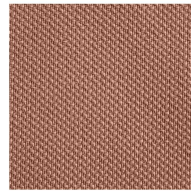
HY-60013
Black



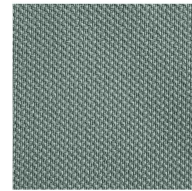
HY-60004
Purple



HY-60000
Dark Blue



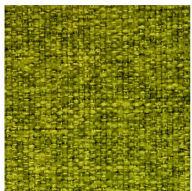
HY-60000
Rusty Orange



HY-60000
Pine Green



HY-60020
Dark grey



VB3355COL501

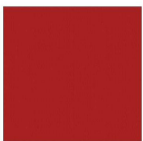


VB3355COL808



VB3355COL902

Plastic Color Card



Red



Sky Blue



Pink



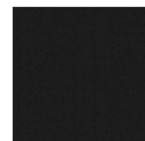
Yellow



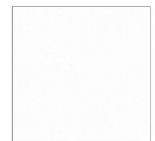
Taupe



Gray



Black



White



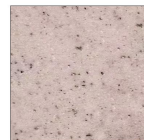
Dark Blue



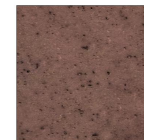
Rusty Orange



Pine Green



Rice Husk Color



Coffee Color

Dimensions

Staff Swivel Chair

Height: 835 ~ 935mm

Width: 585mm

Depth: 560mm

Seat Height: 440 ~ 540mm

Weight: 11.5kgs

